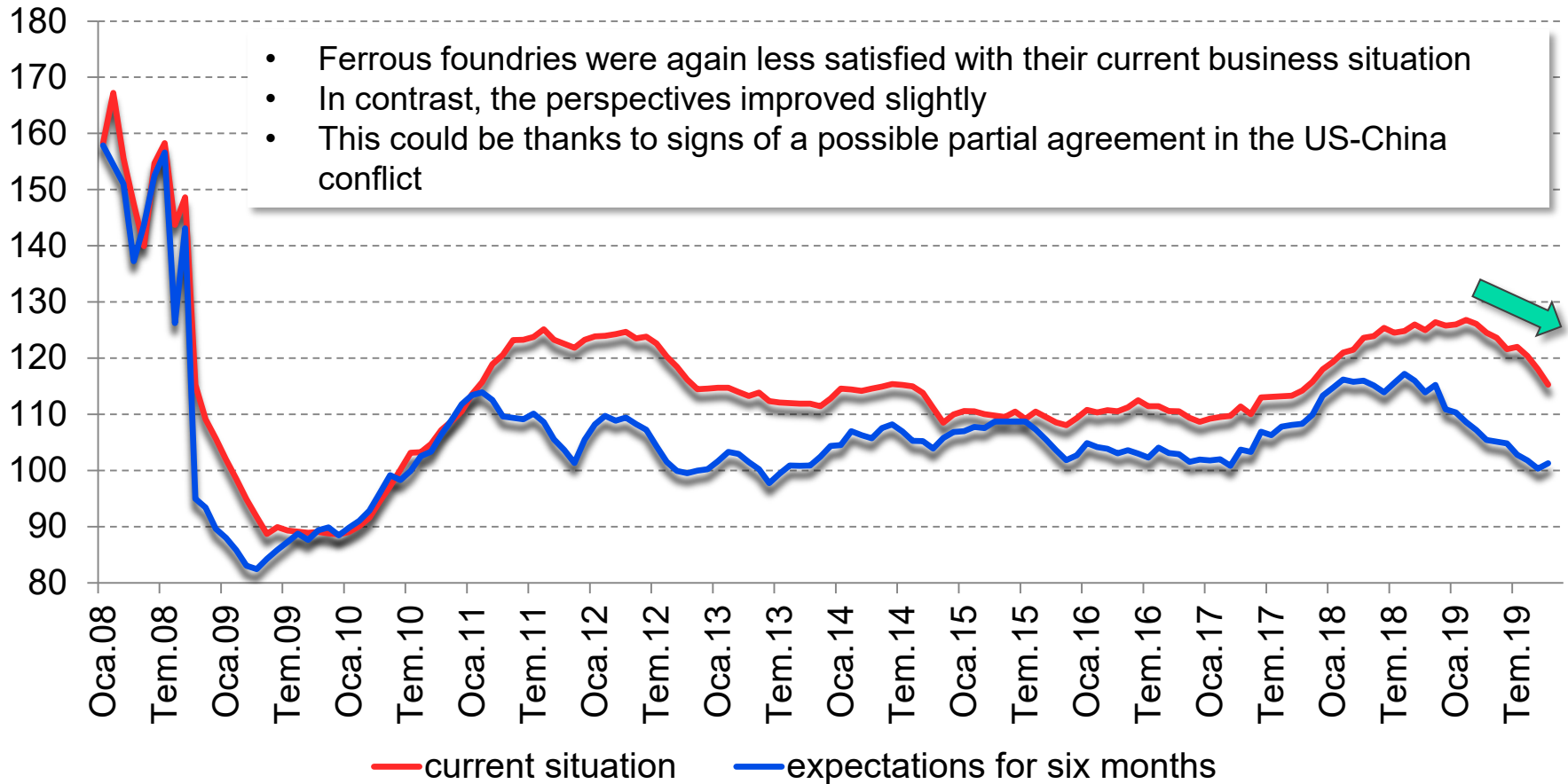


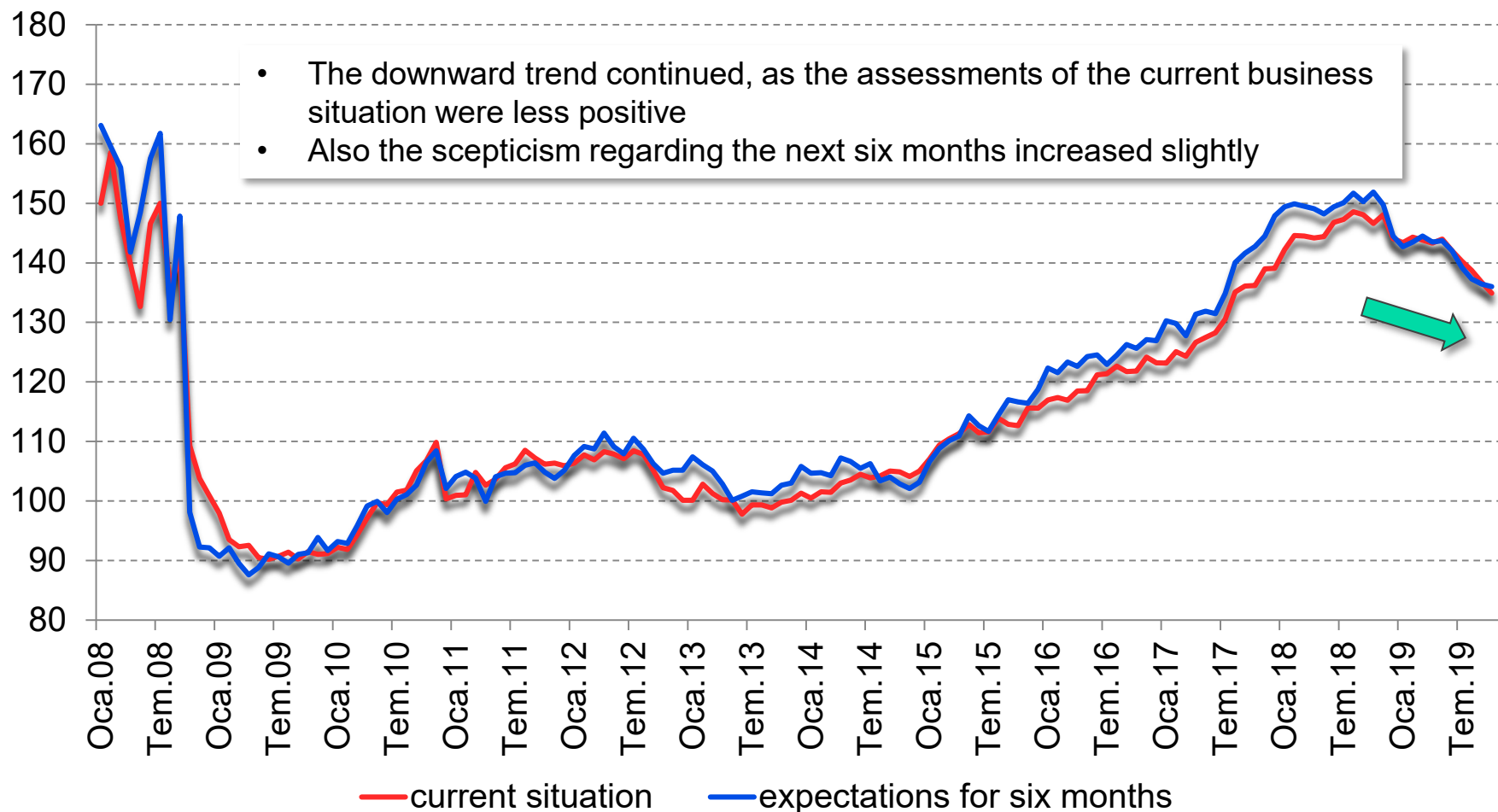
FISI – European Foundry Industry Sentiment Indicator October 2019 Ferrous Castings



Source CAEF, Index 2010 = 100, country weight based on production 2017

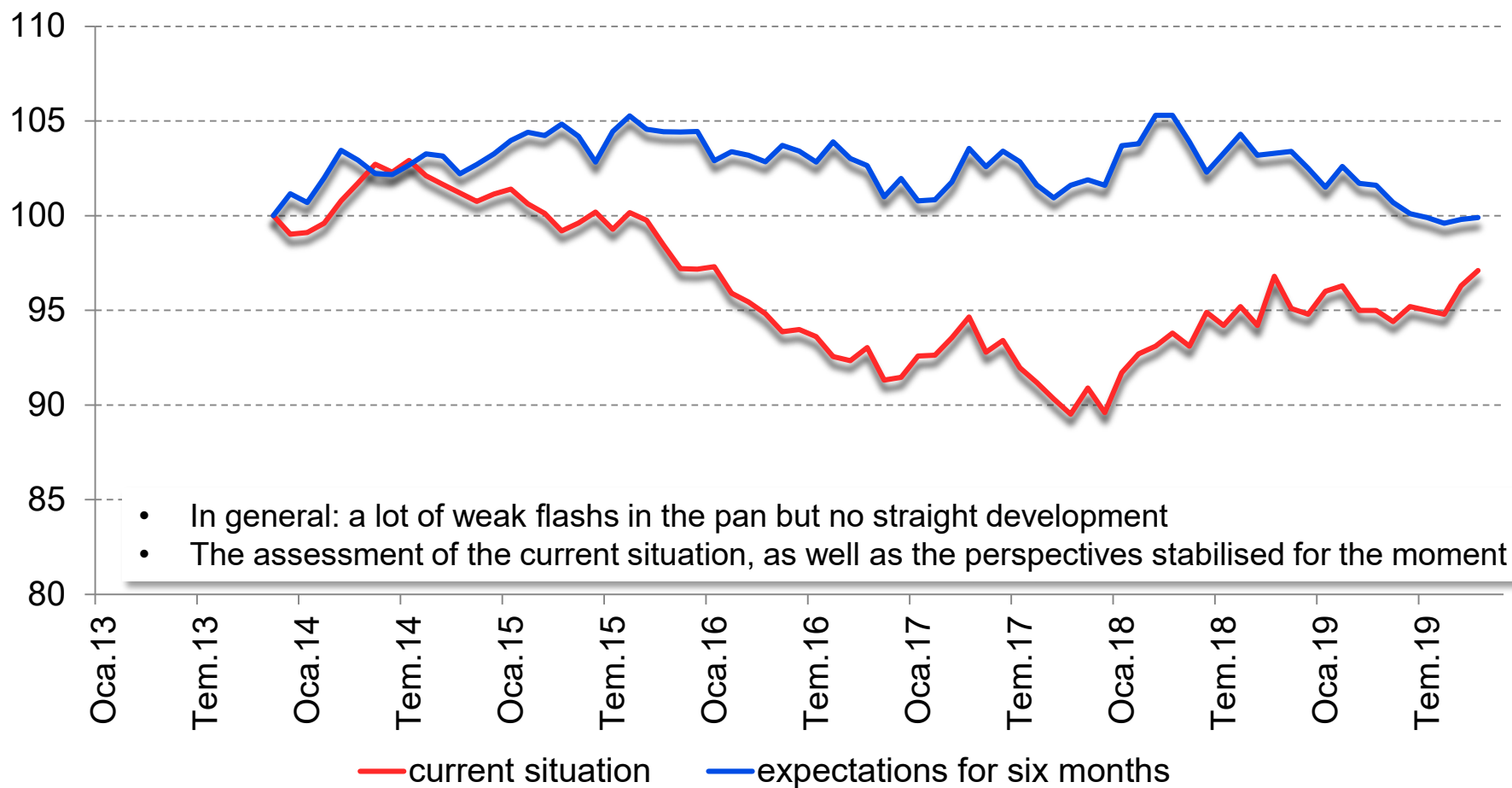
FISI – European Foundry Industry Sentiment Indicator October 2019

Non-Ferrous Castings



Source CAEF, Index 2010 = 100, country weight based on production 2017

FISI – European Foundry Industry Sentiment Indicator October 2019 Steel Castings



- In general: a lot of weak flashes in the pan but no straight development
- The assessment of the current situation, as well as the perspectives stabilised for the moment

Source CAEF, Index 2010 = 100, country weight based on production 2017