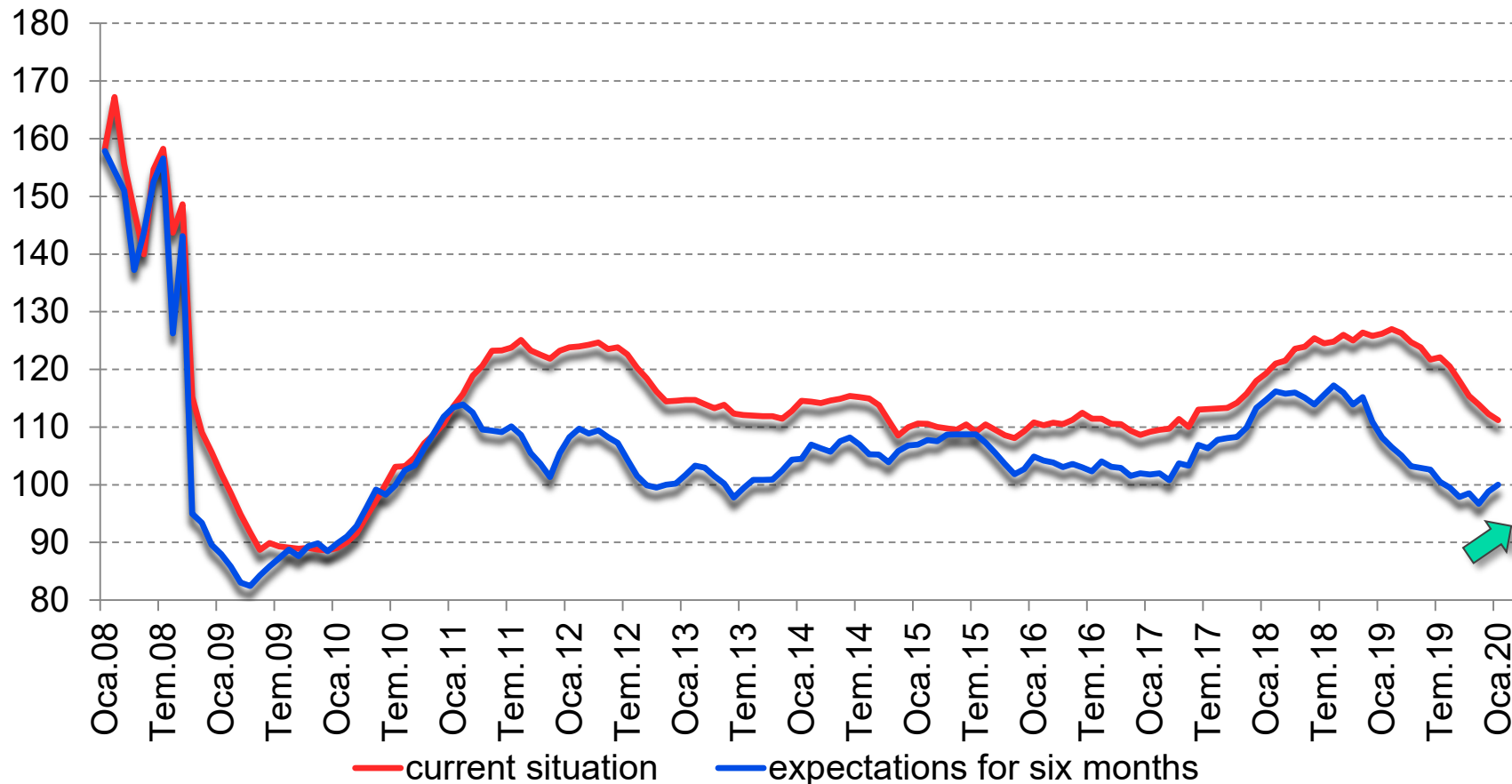
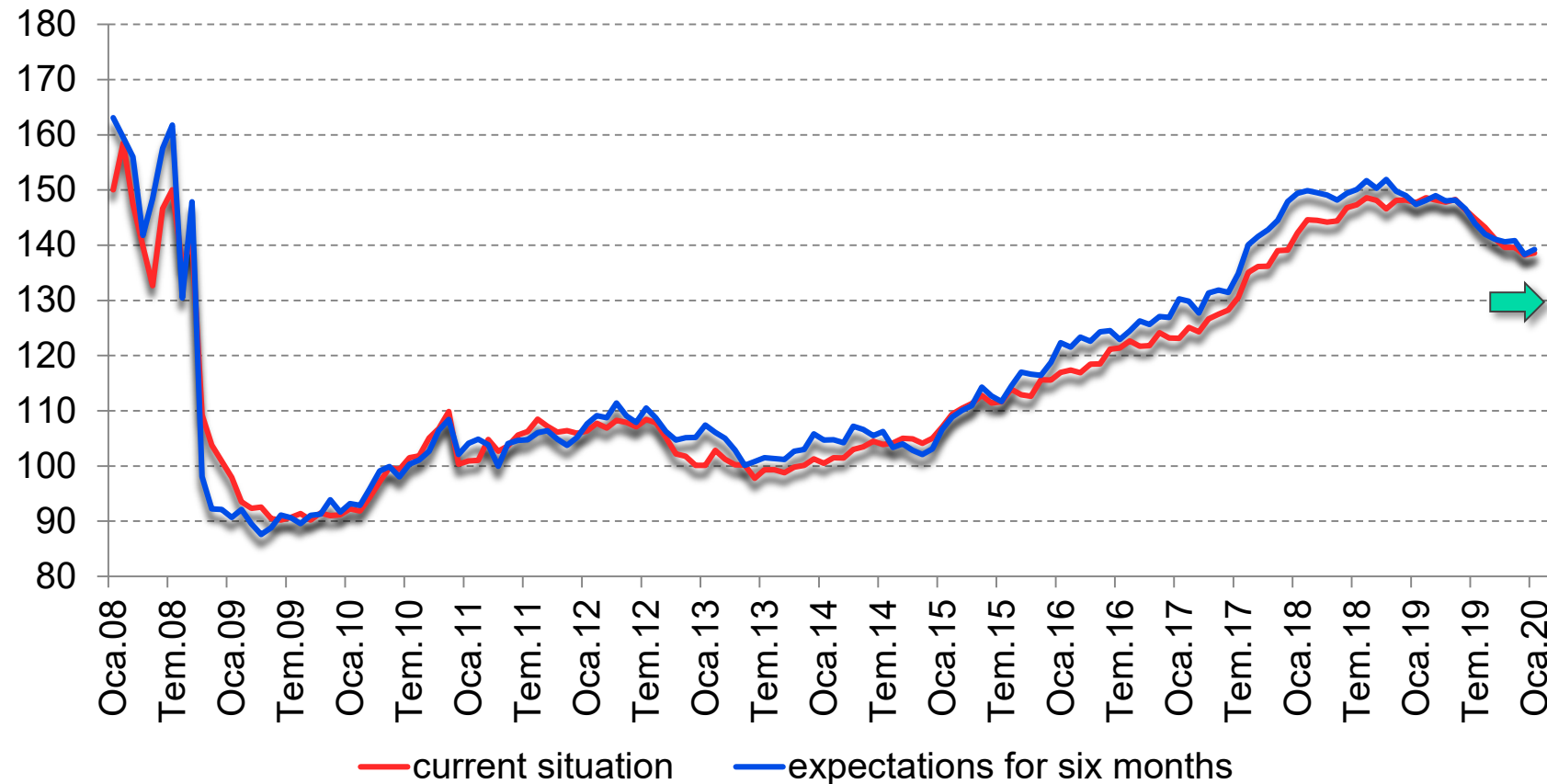


FISI – European Foundry Industry Sentiment Indicator January 2020 Ferrous Castings



While the assessment of the current business situation worsened in January, expectations for the first half of 2020 improved

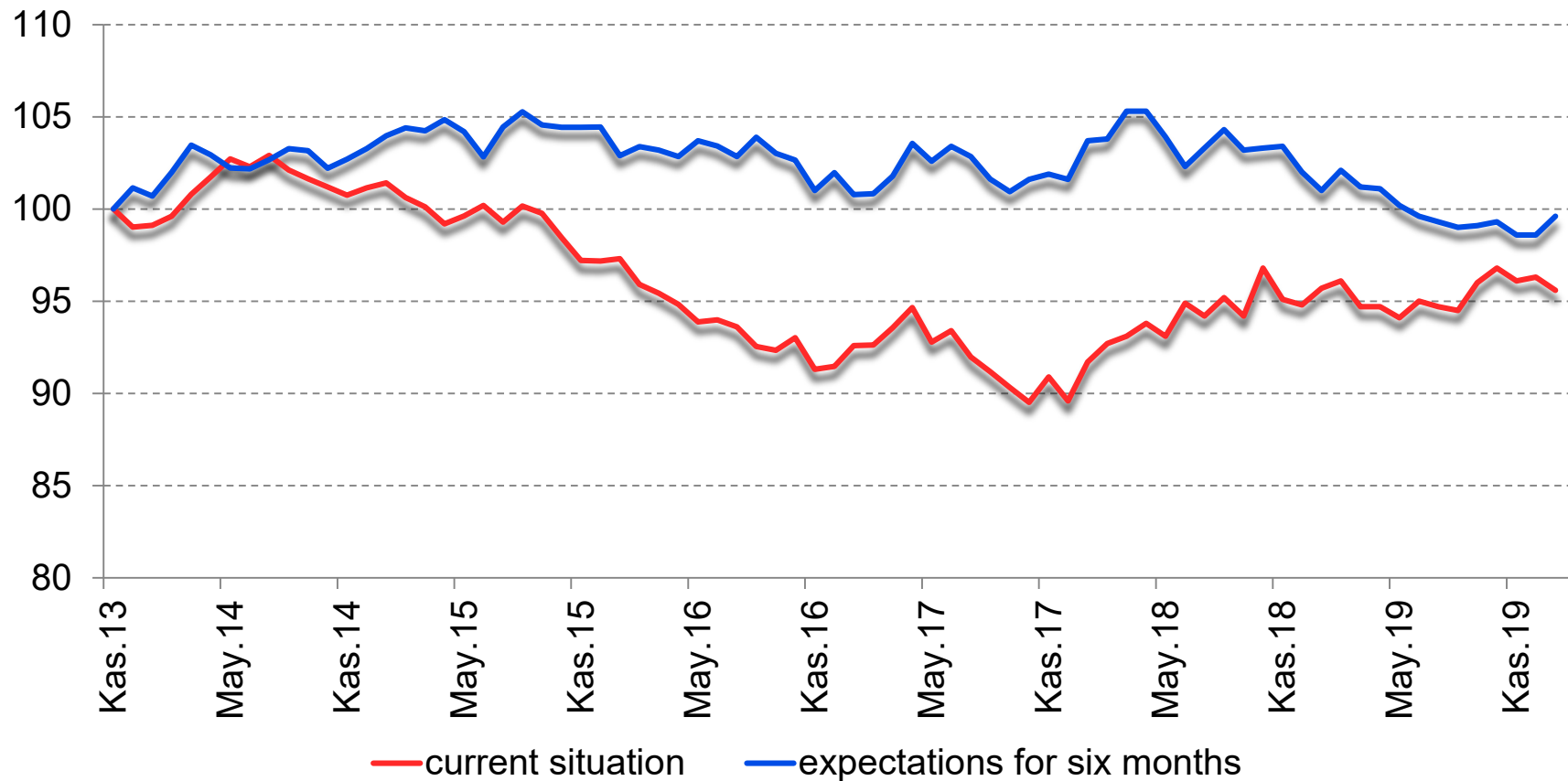
FISI – European Foundry Industry Sentiment Indicator January 2020 Non-Ferrous Castings



- At the start of the year, the current situation stabilised following a downward trend in 2019
- The outlook for the coming months is more optimistic

FISI – European Foundry Industry Sentiment Indicator January 2020

Steel Castings



- Steel foundries were less satisfied with their current business situation
- However, they were more optimistic regarding the coming months
- In general: a lot of weak flashes in the pan, but no straight development